



KONICA MINOLTA

Giving Shape to Ideas

EXPERIENCE THE VIVID COLOUR DIFFERENCE



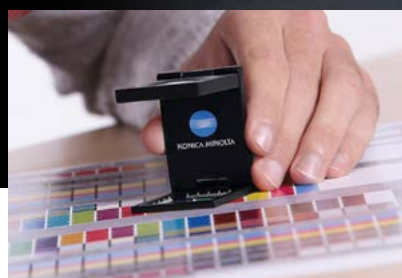
AccurioPress
C83hc

High Chroma Digital Press

*Siberian
success
Сибирский
успех*

Superb colour reproduction with high performance

Experience a new world of colour reproduction with enhanced performance. The wide colour gamut of AccurioPress C83hc High Chroma toner expands new printing business opportunities.



Superb colour reproduction

- A unique electro-photo print system that produces colours close to sRGB; something that cannot be achieved with CMYK print systems
- When in print mode, colours close to sRGB and CMYK can be obtained with the one system

*Siberian
success
Сибирский
успех*

Automated adjustments

- Automated colour and registration adjustments are possible with the Intelligent Quality Optimiser, IQ-501, enhancing quality, productivity and ultimately profitability



AccurioPress C83hc



High productivity

- High productivity (81 ppm/A4), high capacity paper handling and high spec finishing options for high volume printing.

Excellent versatility

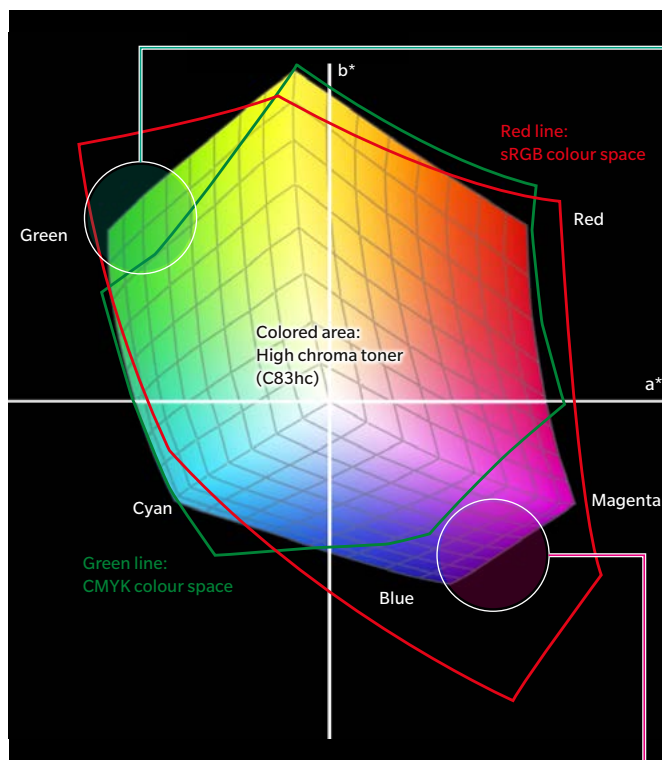
- Wide paper weight compatibility up to 350 gsm.
- Excellent versatility, handing a variety of media with ease including envelopes, banners and textured stocks.

*Siberian
success
Сибирский
успех*

Power of colour reproduction

Colours seen in screen or images shot using a digital camera can express a wider colour gamut than CMYK used for conventional printing. For this reason, because CMYK ink or toner has a narrow gamut of colours such as pink, purple and bright green, colours tend to become dull or muddy when printing RGB images.

As the world's only printer that uses a new toner free of the restrictions imposed by the colour gamut of conventional toners, the AccurioPress C83hc offers a great solution to such problems.

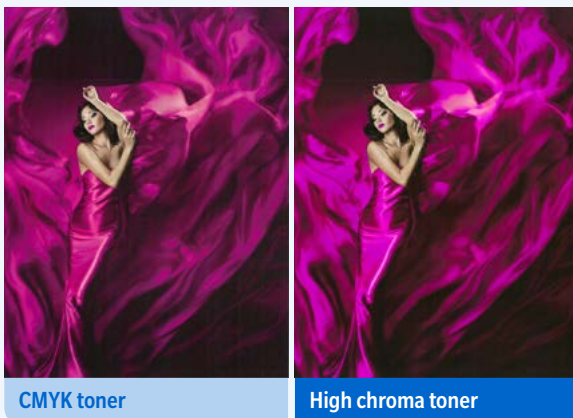


Enhanced light blue/green

The combination of a wider colour gamut and higher L value of high chroma cyan toner mean that clear and bright colours, especially bright blues and greens can be maintained much more effectively than what can be achieved with CMYK toner based systems.



Actual printed images scanned by bizhub MFP. The difference between the two colours may not be seen or smaller when this document is printed with standard CMYK printer.



Enhanced pink/purple/magenta

The large colour difference between CMYK printing and RGB colours displayed on a monitor is one weakness of traditional CMYK print systems that can be avoided with a high chroma AccurioPress C83hc.

Vivid colour with the AccurioPress C83hc makes it possible for graphic designers to create eye-catching posters and POP, making it a point of difference from fellow printers.

Actual printed images scanned by bizhub MFP.

Applications

The wider colour gamut with the AccurioPress C83hc means that colours closer to RGB can be obtained. This is great for applications like printing studio photos, photo books, photos of nature, illustrations, CG, web to print and more. The printed image will be more natural and impressive when compared to an image produced on a conventional CMYK system. The expansion of spot colour reproduction is useful for printing company logos, POP with high impact, packaging and poster creation.

Studio photographs, photo books, etc.

The high chroma toner used by the AccurioPress C83hc utilises colour materials featuring greater saturation and brightness, resulting in smoother skin tones, making it ideal for photograph and photo book printing.

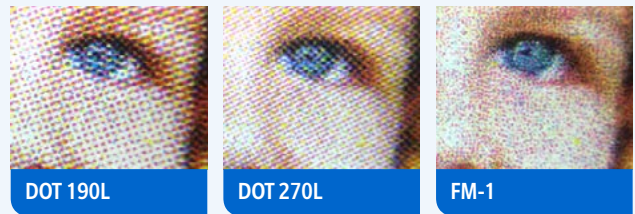
High quality prints can be supplied for catalogue applications for products like cosmetics and apparel.

Nature photographs, apparel catalogues, etc.

In addition to the conventional CMYK colour gamut, one of the greatest features of AccurioPress C83hc is its ability to reproduce colours difficult to realise using a CMYK printer such as sunset purples, the pink of flowers, high-key greens and blues. This makes it possible to express the intent of photographers and designers, for example, with greater fidelity in prints. Moreover, prints of items such as apparel catalogues or fashion photographs can be supplied with colours close to the originals.

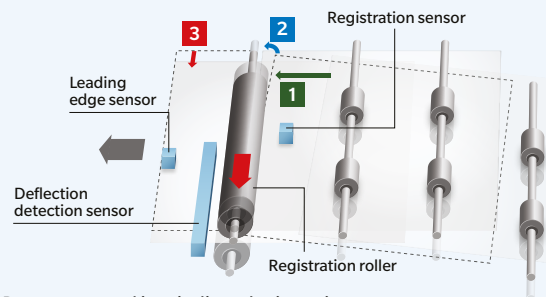
Various screens and smooth gradation owing to sophisticated dot control

Best suitable screen can be selected from various screens available for AccurioPress C83hc. Dot screen x 6 types, line screen x 3 types, FM screen x 3 types, total 12 screens are available for choice depending on the application or purpose.



High precision registration mechanism

A registration swing mechanism capable of highly accurate detection of paper misalignment and skew is included, producing a professional finish for duplex printing that needs to be accurate for use in additional printing and for trimming/bookbinding. The mechanism also automatically corrects paper-feeding misalignment in the main unit tray, contributing to both improved quality and higher productivity. Paper conveyed in misaligned orientation is pressed against the registration roller to correct the misalignment, while the registration swing mechanism moves shifted paper into the correct position.



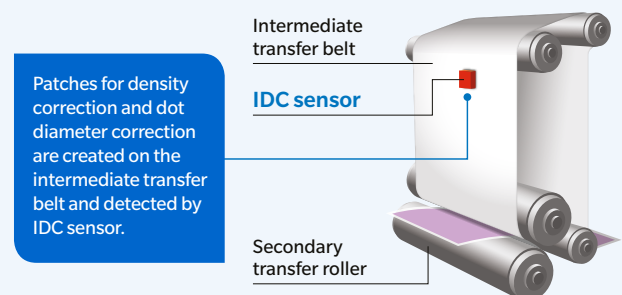
- 1 Paper conveyed in misaligned orientation
- 2 The paper position is corrected by reversing the roller and pressing it against the paper.
- 3 When the deflection detection sensor detects paper offset, the registration roller shifts sideways to correct the alignment.

Real-time image optimisation with IDC sensor

This function controls image stability in short intervals during continuous printing by detecting density correction patches and dot diameter correction patches created on the intermediate transfer belt furnished with an IDC sensor, delivering stable high quality for a wide range of densities through 2 types of density calibration.

Reducing print waste relating to colour reproduction helps not only to reduce production costs but also to enhance customer trust.

*Operates only when the image stability priority setting is enabled.



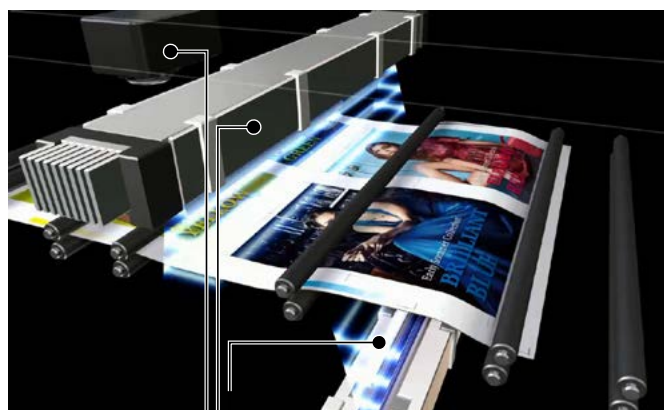
Automated adjustments to maintain the highest quality

Using the Intelligent Quality Optimiser [IQ-501] (option), it is now possible to automatically perform colour / front-to-back registration adjustments, considerably reducing the time required for adjustments and contributing to higher operation rate for production. Measurements and inputs performed manually are no longer necessary.

The IQ-501 maintains colour reproduction and front-to-back registration in real time during printing operation. Consistent realisation of high-quality print contributes not only to the reduction of print waste, and labour times for set up, and importantly delivers high quality print results time after time.

Hybrid colour measurement

The IQ-501 is included with a Hybrid Scanner system, enabling measurements for front-to-back registration in one pass. Measured data is used for various auto adjustments and converted into density values for real-time adjustments. Konica Minolta's spectrophotometer, which has won acclaim for its measuring accuracy is included. Hybrid colour measurement combined with scanners enables colour balance and printer profile adjustments with higher accuracy, faster.



- Spectrophotometer
 - Colour correction
 - Profile creation
- Scanner 1
 - Colour correction (for face down printing)
 - F/B registration adjustment (back)
- Scanner 2
 - Colour correction
 - F/B registration adjustment (front)
 - Profile creation



Intelligent Quality Optimiser [IQ-501]

Major functions of IQ-501

Auto adjustment functions before production.

1. Auto colour adjustment
 - Density balance correction
 - Maximum density adjustment
 - Colour density control (Density gradation)
 - Exact color (Colour gradation)
 - Packaged auto colour adjustment (One step operation for above 4 items + machine calibration. 5 items can be selected)
2. Auto front-to-back registration adjustment

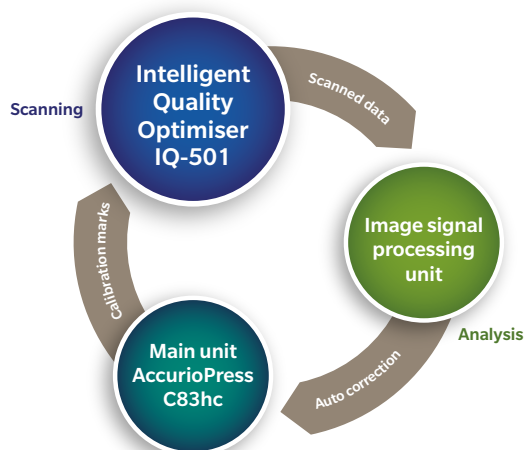
Real time monitoring & correction during printing

1. Real time colour correction
2. Real time registration correction

Auto printer profile creation

Real-time colour & registration monitoring and correction

Colour tone and front-to-back registration are monitored and automatically corrected in real time without degrading productivity. As a result, colour fluctuations and registration misalignment are kept to a minimum, which helps provide high quality print products in a stable manner. Consistent results are ensured in printing of company logos for which the colour stability is essential, and cards, page numbers of booklet and ruled lines for which accurate positioning is essential. In addition, print waste caused by unstable colour and registration is minimised, contributing not only to cost reduction but also to improved customer trust.



Excellent versatility

Expanded media capability, handling stocks up to 350 gsm

With the wide paper weight compatibility, print services including thick paper packages, tags, DMs, sales promotion tools are greatly expanded. The air suction paper feed mechanism incorporated in the feeder enables reliable feeding of thick paper that causes a high transport load. In addition, the enhanced paper catalogue function enables printing on a variety of paper types with ease.

Envelope printing*

Using an Envelope-dedicated Fusing Unit [EF-103], stable and high quality envelope printing is achieved, even when performing high speed printing. In addition, inexpensive, center-glued universal envelopes can be used thanks to less difference in glossiness on the overlapped area, contributing to a reduction of overall printing cost as well.

Enhanced banner printing (up to 1,300mm) and auto duplex banner printing*

A4/Letter x 6-up is possible due to the banner printing capability of 840mm or longer, enabling production of A4 x four-fold catalogues and book covers for A4 landscape booklets, etc. at high productivity that far exceeds large format inkjet printers. In addition, an auto duplex banner printing function is available that can accept a maximum of 762mm long, allowing efficient print work for the production of A4/letter size tri-fold menus, pamphlets and catalogues. These superior features help differentiate print services from others.

Newly adopted options for effective banner printing*

The newly-adopted LU-202XLm that can continuously feed max. 1,000 sheets of 762mm banner format enables efficient banner printing including book covers, three-fold menus, etc. In addition, connecting the optional "MK-740m" enhances operability during high volume output.

Usability

Konica Minolta Image Controller [IC-605]*

Job control/editing also on the main unit control panel

Allows job management including job ticketing and pagination with intuitive operation. Tone curves can be also adjusted in a similar manner to that of Color Centro. In addition, connecting a USB mouse provides an operational environment similar to a PC.



Color Centro (Colour Management Utility)

Equipped with Exact Color, which performs high-precision 3D calibration, resulting in a major improvement in colour adjustment capability over conventional 1D calibration. Work, editing, setting and other tasks relating to colours matched to the main body can be performed, such as colour adjustment, creation of colour profiles and simulations. These functions are also available for RIP files.

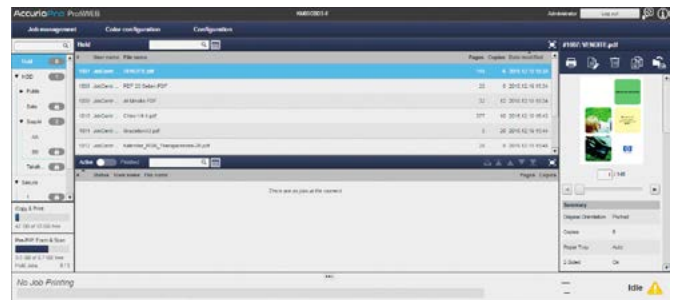
AccurioPro HotFolder

AccurioPress is equipped with a hot-folder utility that further enhances work efficiency and is ideal for automatic processing of items that need to be printed regularly and documents that can only be handled by specific printing processing. The hot-folder utility contributes to reduction of manpower required for job registration as well as of processes need to be performed by the operator.

*Optional

AccurioPro Print Manager

Using the web browser, the job management through sophisticated interface is made available. An easy-to-use interface having a high degree of affinity with the main body panel and printer driver supports more efficient operation. In addition, tone curve adjustment function for each job (or each page) is available.



Equipped with APPE 4.6*

Equipped with Adobe's APPE 4.6 (Adobe PDF Print Engine 4.6), which directly processes PDF files without having to access a printer driver for appropriate transparent effects.

JDF compatibility

Due to JDF compatibility, a standard format for the display and transfer of jobs between printing processes, the operator can use familiar CTP workflow RIPs such as APOGEE, EQUIOS and Prinergy^{*1} for a hybrid workflow with a seamlessly connected offset printer. Digital printing thus becomes an offset printing option that enables more flexible handling.

*1 "APOGEE" is a product of Agfa-Gevaert N.V. "EQUIOS" is a product of SCREEN Graphic and Precision Solutions Co., Ltd. "Prinergy" is a product of Eastman Kodak Company.

Fiery Print Controller [IC-313/IC-417]

High speed processing & high quality

The AccurioPress C83hc is able to RIP at 1200dpi × 8bit at high speed. With a wide range of colour profiles, flexible colour management is made possible.

Colour management

IC-313/417 performs colour management for each CMYK, RGB and spot colour space irrespective of the application or file format, making it ideal for colour management matched to purposes such as proofing and production of final deliverables.

Equipped with APPE 4.4

Equipped with a new APPE 4.4 (Adobe PDF Print Engine 4.4), which supports transparent effect processing of PDF files as standard.^{*1}

^{*1} Supported only by [IC-313]

Command WorkStation

Efficiently manages jobs from a PC on the two screens of Job Center and Device Center.

AccurioPress C83hc General Specifications

Type	Console type	
Colour support	Full colour (Wide colour gamut with high chroma toner)	
Output resolution	3,600 dpi (Equivalent) x 1,200 dpi	
Gradation	8 bit / 256 gradation	
CPU	Core i5 4570S 2.9GHz	
System memory	4GB	
Paper weight	Standard mode	62 gsm to 350 gsm (Auto duplex), (81 gsm to 350 gsm : Coated paper)
	Banner printing mode	128 gsm to 256 gsm
	Standard trays	62 gsm to 216 gsm, (62 gsm to 256 gsm: A4 or larger size)
	Optional trays	62 gsm to 350 gsm (PF-707m, MB-506) 62 gsm to 300 gsm (MB-508, PF-602m, LU-202m, LU-202XL, LU-202XLm)
Paper size	Standard mode	SRA3, A3, B4, SRA4, A4, SRA4S, A4S, B5S, A5S, 12" x 18", 11" x 17", 8 1/2" x 11"
	Banner printing mode	Min. 139.7 mm x 182 mm to Max. 330.2 mm x 487.7 mm
	Optional trays	Max. 330.2 mm x 1,300 mm (Max. 330.2 mm x 762 mm : Auto duplex)
		100 mm x 148 mm to 330.2 mm x 487.7 mm (MB-506/MB-508), to 330.2 mm x 1,300 mm (with MK-740) 100 mm x 139.7 mm*1 to 330.2 mm x 487.7 mm (PF-707m) 100 mm x 148 mm*1 to 330.2 mm x 487.7 mm (PF-602m, LU-202m) 100 mm x 148 mm*1 to 330.2 mm x 750 mm (LU-202XL), to 330.2 mm x 762 mm (LU-202XLm)
Max. printing area	323 mm x 480 mm, (323 mm x 1,295 mm : Banner paper)	
Image loss	Top edge: 4.0 mm or less, Bottom edge: 3.0 mm or less, Right/Left edge: 3.0 mm or less	
Warm-up time	390 sec. or less (At room temperature)	
Print speed ²	A4 (Landscape)	81 ppm (Full colour/Monochrome)
	A3	45 ppm (Full colour/Monochrome)
Paper feeding capacity (80 gsm)	1,500 sheets (Standard tray), Max. 15,390 sheets (Standard tray + PF-707m x 3 units)	
Paper output capacity (80 gsm)	150 sheets (with optional output tray OT-511), Max. 10,000 sheets (LS-506 x 2 units)	
Power source	AC 220V to 240V, 20A, 50Hz/60Hz	
Power consumption (Main unit only)	Max. 6,000W	
Dimension	800 mm x 903 mm x 1,041 mm (Main body only)	
Space required	631 mm or more for front (for sliding out ADU unit), 200 mm or more from the rear duct, 100 mm or more for both sides	
Weight	Approx. 313 kg	



Ecology & Environment

KONICA MINOLTA copiers and multi-functional products are designed with the environment in mind.



- Energy Star
- Eco-conscious Toners
- RoHS Compliance
- Production at ISO Certified Factories
- WEEE Compliance



Requirements for safe use.

- Please read and follow the instruction manual to ensure safe operation.
- Only operate using appropriate power supply and voltage.



KONICA MINOLTA

Product appearance, configuration and/or specificants are subject to change without notice.

The Konica Minolta logo and the symbol mark, are registered trademarks or trademarks of Konica Minolta Holdings, Inc. bizhub, PageScope, Simitri and the Emperon logo are registered trademarks or trademarks of KONICA MINOLTA BUSINESS TECHNOLOGIES, INC. Windows is registered trademark of Microsoft Corporation in the United States and other countries. Adobe and PostScript are registered trademarks or trademarks of Adobe Systems Incorporated. All other brand and product names are registered trademarks or trademarks of their respective owners.

Printed on a Konica Minolta AccurioPress C83hc